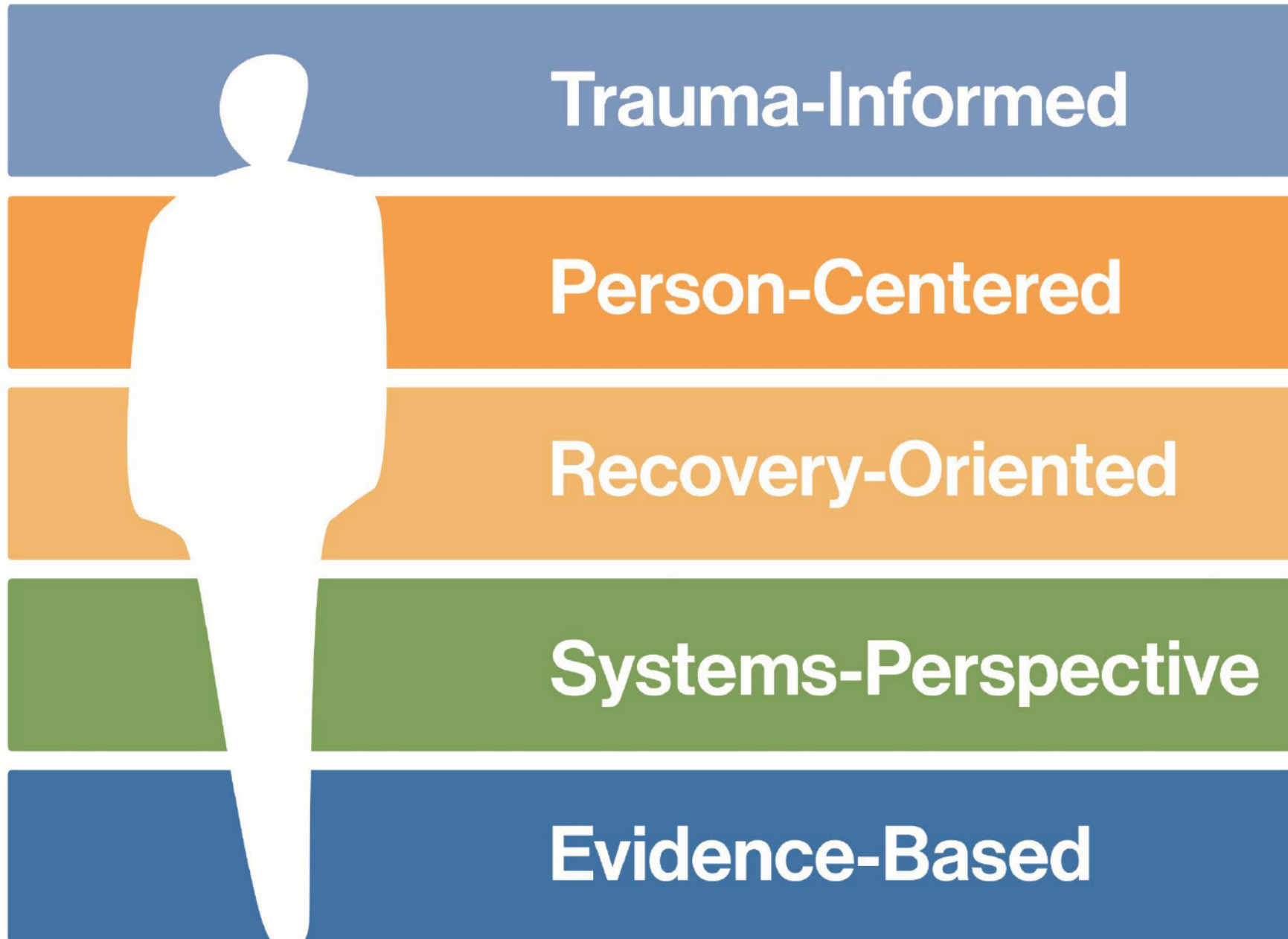




**OneRise**  
**HEALTH CAMPUS**



## Guiding Principles

OneRise will serve as an enduring world class precedent of a landscape for **healing** (body, mind, and soul), **learning**, and **rebuilding**

### Trauma-Informed Design



### Connection to Nature



### Support Personal Agency



### Encourage Movement



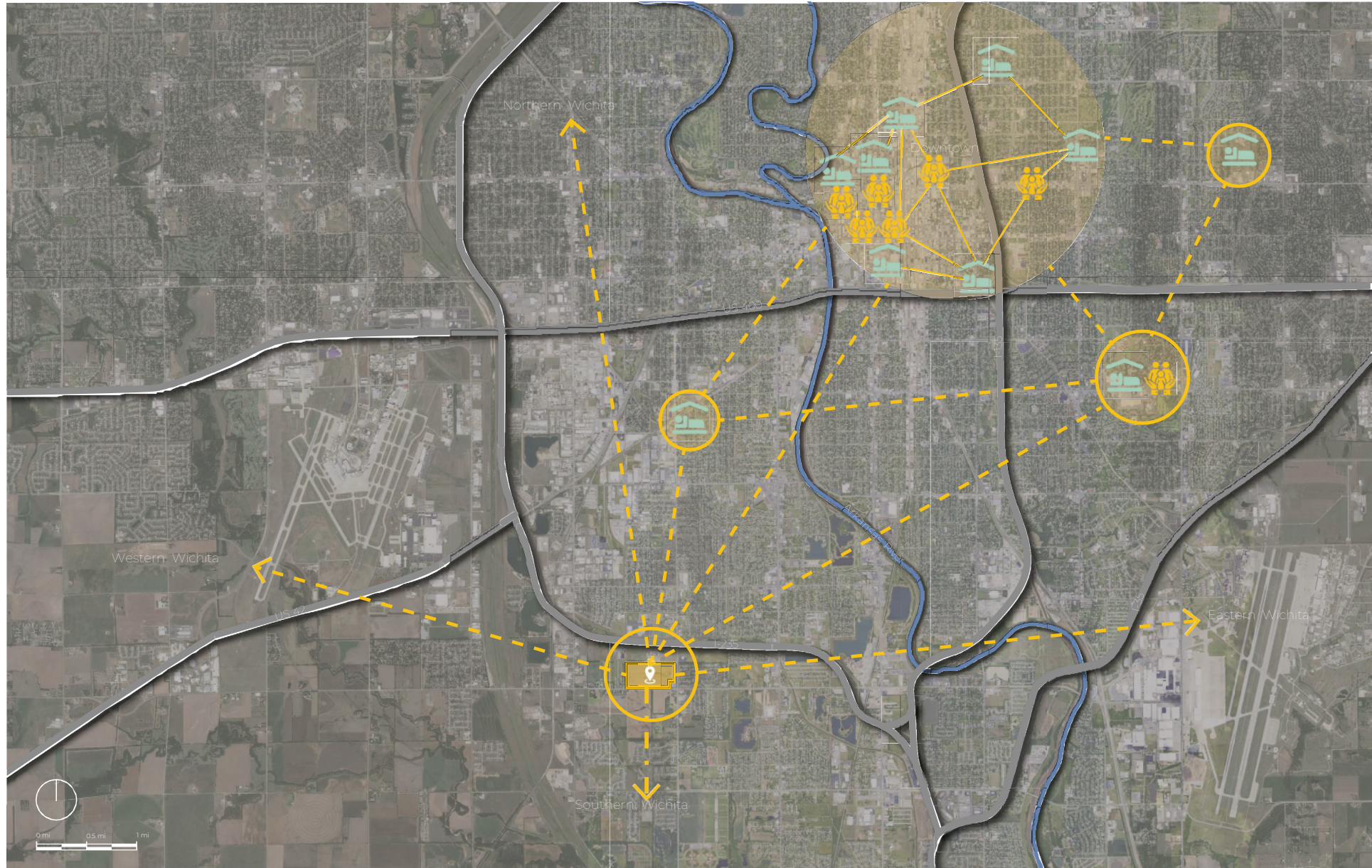
### Promote Community



# Existing Site



# Interconnected Services Through OneRise





**OneRise Park**

**“Nature itself is the best physician”**  
Hippocrates

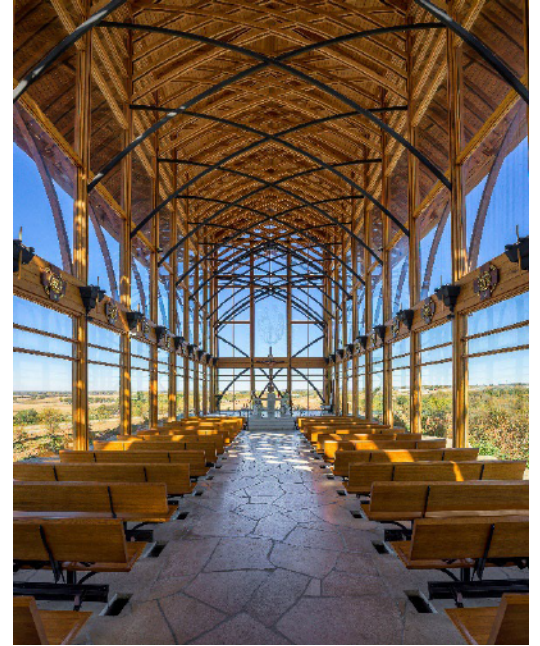
# OneRise Health Campus Master Plan



S. MERIDIAN AVE.

W. MACARTHUR RD.

## Park Overview







**OneRise Master Plan Concept**

**Behavioral Health Hospital**  
9.5 Acres

**Permanent Supportive Housing**  
4.3 Acres

**Community Care Center**  
8.4 Acres

**FQHC**  
6.7 Acres

**OneRise Park**  
10.2 Acres

**Childcare**  
3.2 Acres

**Medical Office Building/  
Research/Education**  
9 Acres

**Workforce Housing**  
5 Acres

**Affordable Housing**  
5 Acres

**Affordable Housing**  
5 Acres

W. MACARTHUR RD.

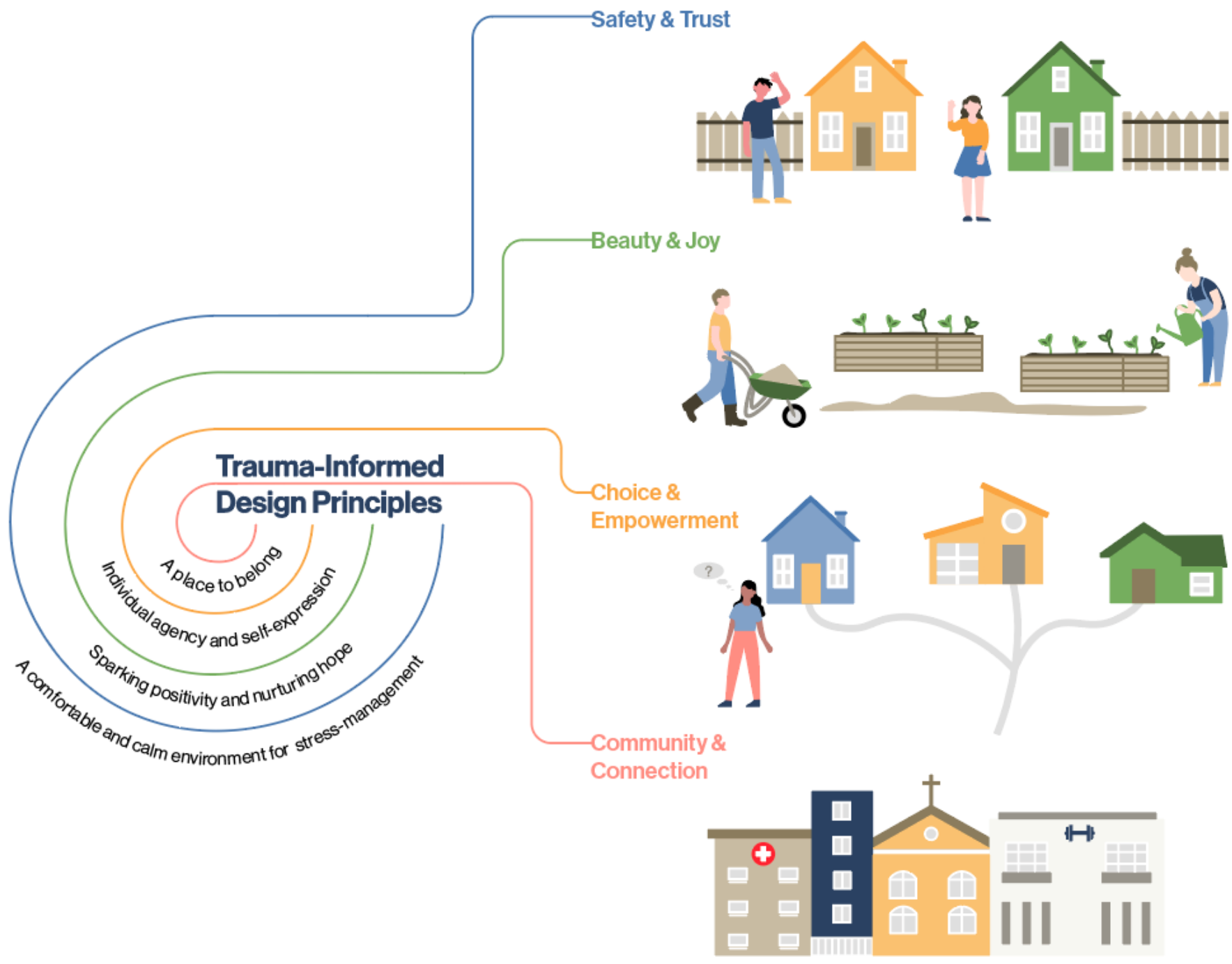
S. MERIDIAN AVE.

# Campus Services



An architectural rendering of the OneRise Community Care Center. The building is a long, single-story structure with a curved roof and large glass windows. The facade is clad in vertical wood slats. In the foreground, there is a paved plaza with several people walking and sitting on a white bench. The area is landscaped with trees and flowering plants. The sky is blue with a few clouds and a butterfly.

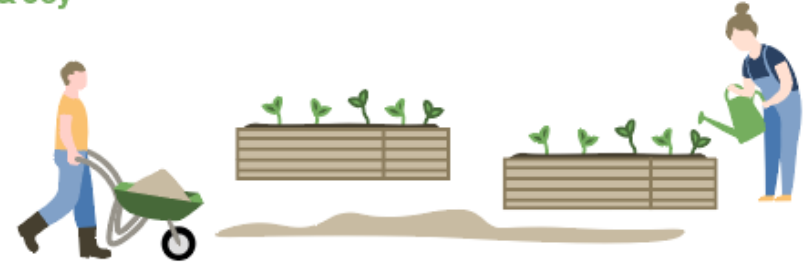
# OneRise Community Care Center



Safety & Trust



Beauty & Joy



Choice & Empowerment



Community & Connection





# Permanent Supportive Housing



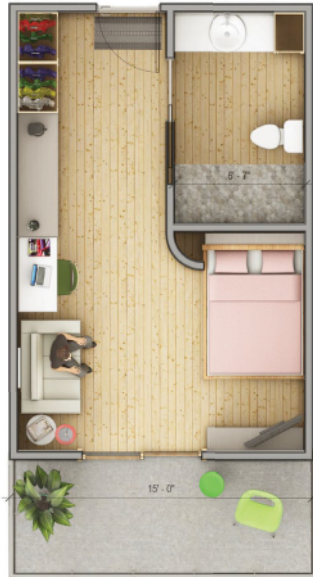
HOUSING CLUSTERS



SERVICES BUILDING

# Permanent Supportive Housing Unit Plans

STUDIO ADA - 315 SQFT



2 BED - 690 SQFT



2 BED PEER SUPPORT - 550 SQFT





# View of CCC Housing From Park





# Together, we rise.



Scan to learn more, donate, or join  
us at the OneRise Health Campus



**OneRise**  
HEALTH CAMPUS